

# CASE STUDY

A D R E N A L I N E	
	CLIENT TRUSTONE FINANCIAL
	LOCATION MINNEAPOLIS, MN



TRUSTONE  
FINANCIAL



**Diane Rekuski**  
 Licensed Sales Assistant  
 Financial Network  
 Investment Corporation

**TRUSTONE FINANCIAL**  
 Investment Services

P | 763.512.6166  
 800.862.1998  
 F | 763.542.4202  
 E | rekuski@financialnetwork.com

6500 Olson Memorial Highway | Minneapolis, MN 55427

Financial, 6500 Olson Memorial Highway, Golden Valley, MN 55427.

trustonefinancial.org



Financial Network Investment Corporation is located at Trustone.

Grounded In Trust.

14601 27th Ave North, Suite 104 | Plymouth, MN 55447

visit us at [trustonefinancial.org](http://trustonefinancial.org)

[trustonefinancial.org](http://trustonefinancial.org)

**TRUSTONE FINANCIAL**  
 Grounded in Trust.

BALANCE  
CHECKING ACCOUNTS

**TRUSTONE**  
FINANCIAL

Grounded In Trust.

FORWARD MOVING  
CONSUMER LOANS

**TRUSTONE**  
FINANCIAL

Grounded In Trust.

ROCK SOLID  
DEPOSIT SERVICES

**TRUSTONE**  
FINANCIAL

Grounded In Trust.

STEPPING STONES  
INVESTMENTS

**TRUSTONE**  
FINANCIAL

Grounded In Trust.

SOLID FOUNDATION  
MORTGAGES

**TRUSTONE**  
FINANCIAL

Grounded In Trust.

SOLID  
ONLINE BANKING

**TRUSTONE**  
FINANCIAL

Grounded In Trust.

SAFE AND SECURE  
DEBIT CARD

**TRUSTONE**  
FINANCIAL

Grounded In Trust.

At the core of TruStone Financial, we believe in helping you save more of your own money. We understand that there are many competing demands when it comes to deciding to set up a savings plan. That's why we are committed to offering you solid deposit services with features that make regular saving an easier choice.

**SHARE ACCOUNT**

Your share savings account is the account that gets everything started with your banking relationship with TruStone Financial. When you deposit your first \$10 into a share account, you become a member and an owner.

Share accounts earn dividends and you receive a quarterly account statement of all activity. Additional share accounts can be opened to help save for a special purpose, like a family vacation, a down payment for a home, or a college education. You can even name the account, so that you can keep your goal in sight.

**MONEYFUND ACCOUNT**

The MoneyFund Account is designed for those looking to get rewarded, plus keep their money liquid. It requires a minimum balance of \$2,500 to open and earn dividends. Dividend rates climb with your level of investment in this account.

**CERTIFICATES**

When you're ready for more of a commitment than a traditional savings account, we have a variety of rates and terms in our certificates. Dividends are compounded and credited at the end of each quarter and at maturity.

**IRA's**

An Individual Retirement Account (IRA) is a long-term savings program. Over the years, compounding can make a real difference, adding up to a more comfortable retirement for you. We offer the IRA Daily share account for incremental savings and certificates with a fixed rate for a given term.

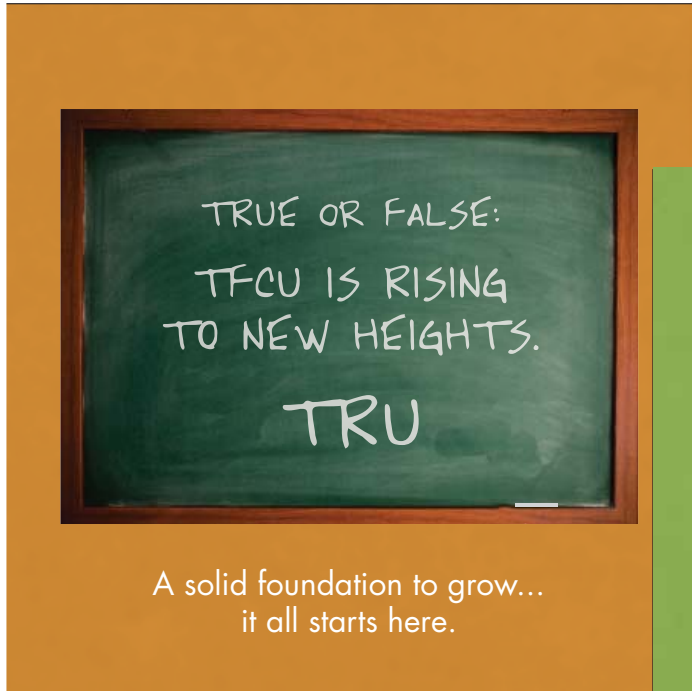
**PAY YOURSELF FIRST**

To help make saving a regular part of your budget, the experts at TruStone Financial can show you how direct deposit and automatic transfers into any of our deposit products add up.

**YOUR MONEY IS SAFE**

Your TruStone Financial savings, checking, and certificates are federally insured to \$250,000 by the National Credit Union Administration (NCUA), an agency of the federal government. For balances that exceed \$250,000, TruStone Financial provides additional private Excess Share Insurance at no charge that will insure your savings balances for an additional \$250,000 for each qualifying account.

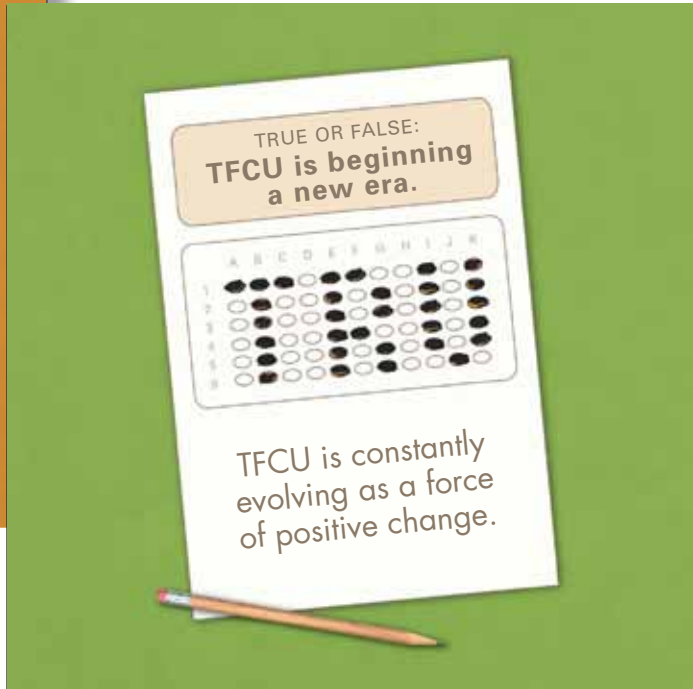
**THE STRENGTH YOU WILL RELY ON**



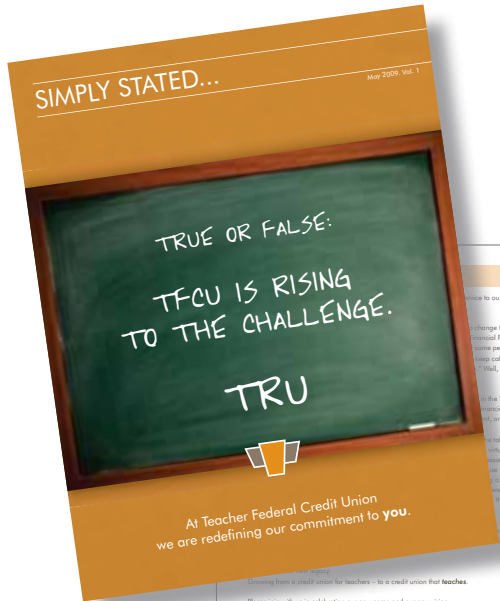
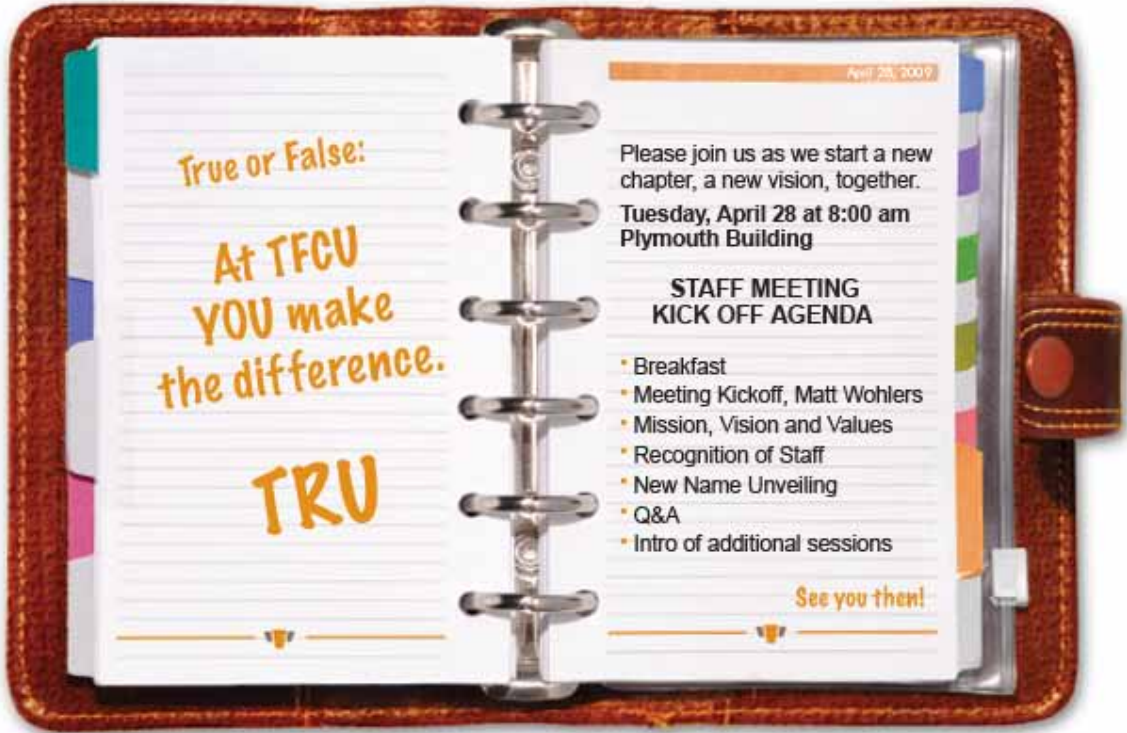
A solid foundation to grow...  
it all starts here.



Grounded In Trust.



Grounded In Trust.



**TRUSTONE FINANCIAL**  
Grounded In Trust.

**HELPING YOU THROUGH THE TRANSITION...**

**Q & A**

**WILL THIS AFFECT MY ACCOUNTS?**  
Your accounts will not change.

**WILL THE LOGO BE USED TWICE?**  
No. In the future you will see TruStone Financial Federal Credit Union listed as the creditor for your loan, but each loan account will only be listed once.

**DO I NEED TO NOTIFY MY EMPLOYER REGARDING MY FEDERAL EMPLOYER CONTRIBUTION?**  
No. You do not have to do anything in order for your direct deposit to continue. The information that your employer sends to TFCU will continue to come to TruStone Financial Federal Credit Union.

**WILL MY CHECKS AND ATM CARD STILL WORK?**  
Yes. The next time you receive checks, they will bear the name of TruStone Financial. Your ATM card will continue to work as well. With the reassurance of ATM, debit and credit cards, the cards will come with the new name of TruStone Financial.

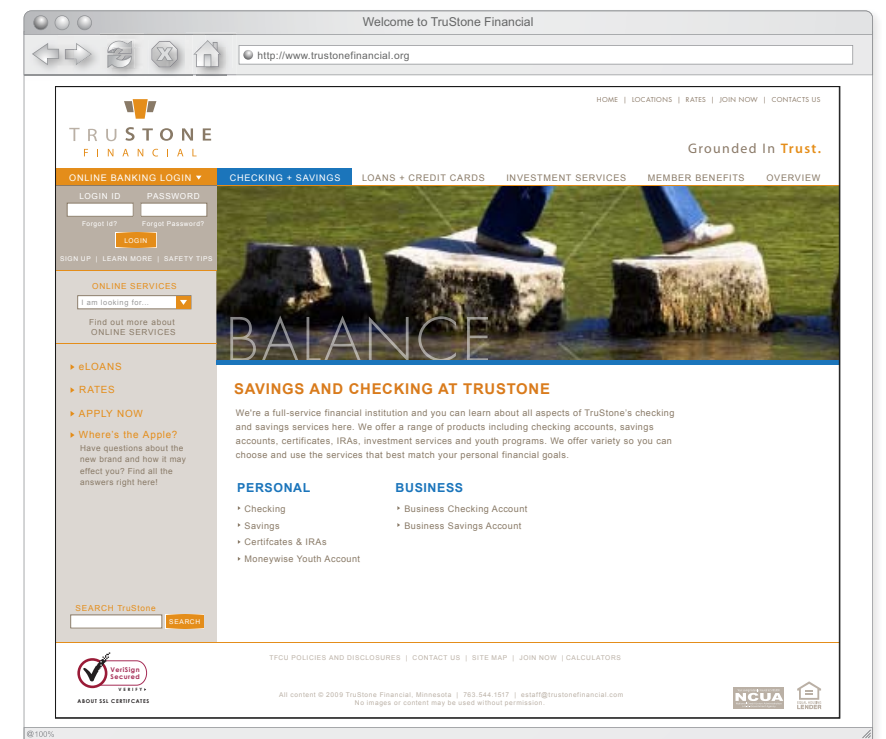
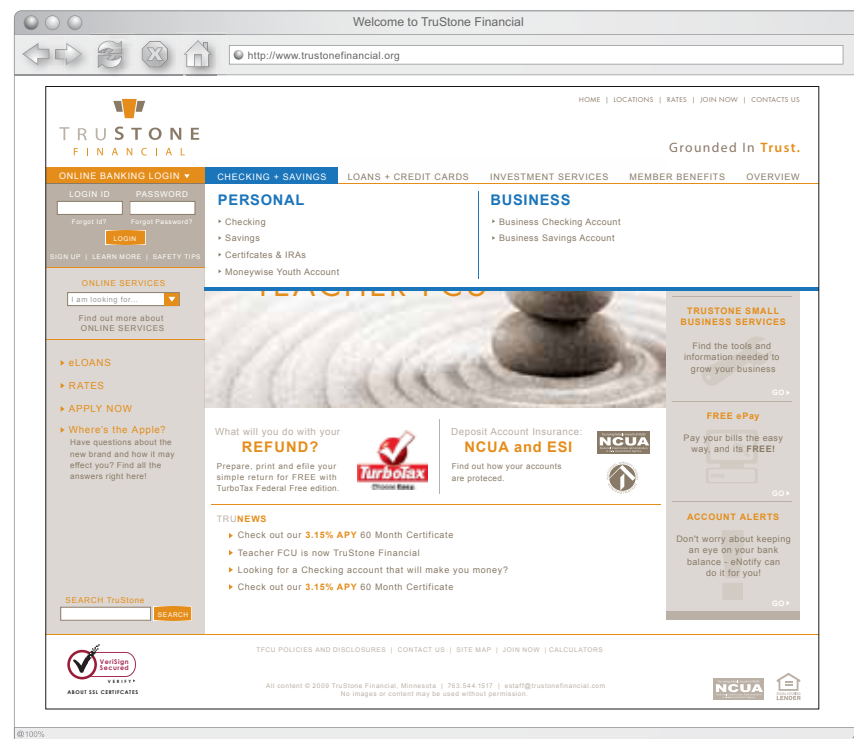
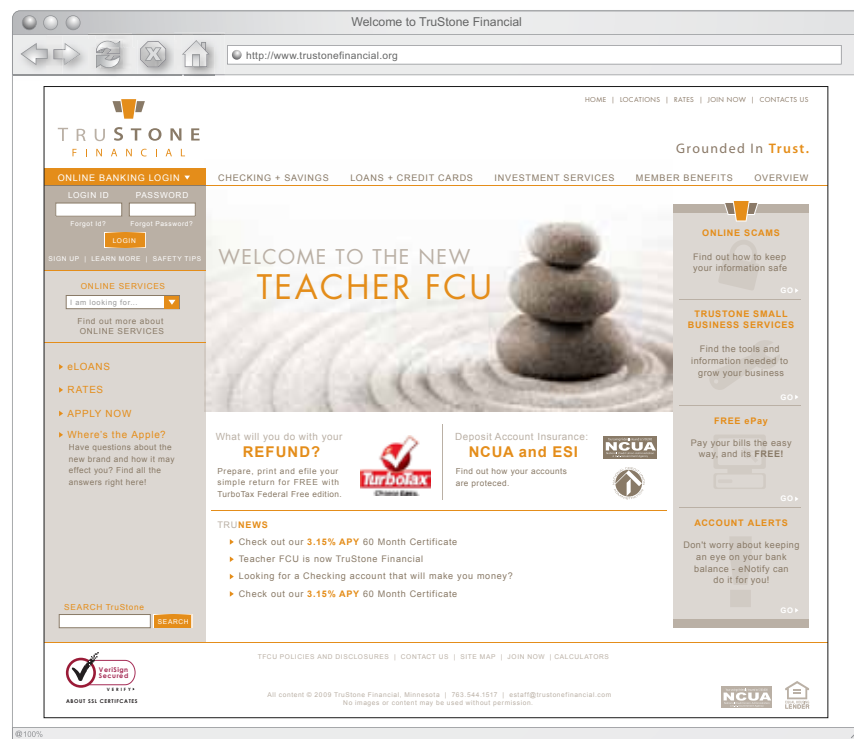
**HOW WILL THE CHANGE AFFECT MY BRANCHES?**  
We'll continue to be served by the same people. Plans are underway to upgrade our existing branches to better serve you. The same friendly smile that has greeted you in the past will continue to greet you when you visit TruStone Financial. Our hours are changing to serve you better too. Monday - Friday 8 am - 5 pm and Saturdays from 9 am - noon.

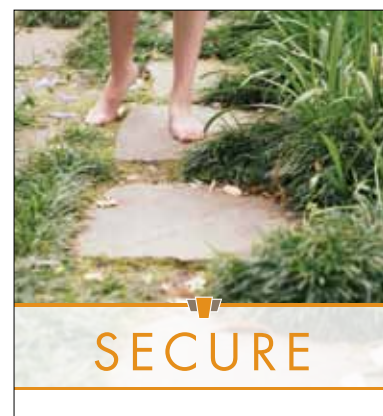
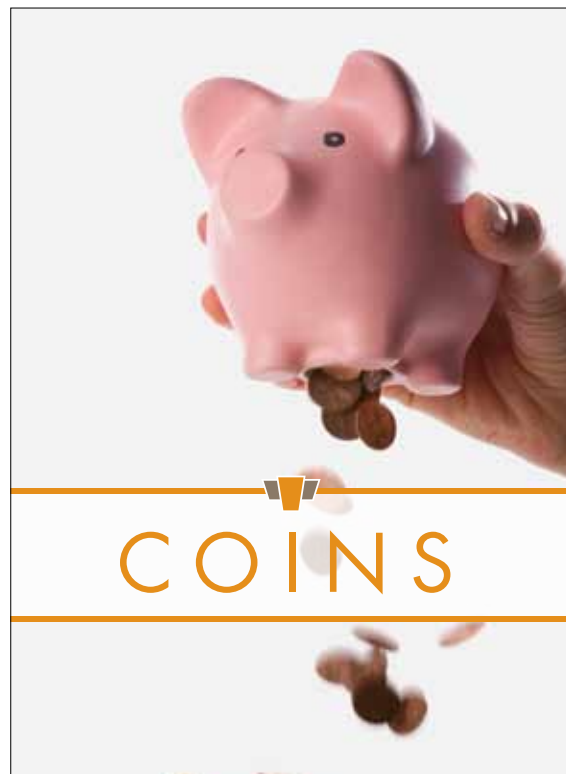
**WHAT WILL BE IMPACTED BY THE NAME CHANGE?**  
Beginning June 1st, all of our printed materials and signs will be changed to reflect the new name, but we will still be the same credit union providing the service you expect. In addition, a more user-friendly website will be available at [trustonefinancial.org](http://trustonefinancial.org).

**STEPHEN BOULG**  
Chairman

**MATT WOHLERS**  
CEO











CLIENT	TRUSTONE FINANCIAL	
	▶ IN-BRANCH GRAPHICS	